



SIGNATURE RESIDENCES FOR THE DISTINGUISHED





Première
BY H&S

ABOUT FASHION TV

Fashion TV has been a celebratory name since 1997 with its top-notch fashion and lifestyle broadcasting. It has established an eternal and exclusive edge with original, unbiased and informative programming of fashion, style, beauty and trends. Moreover, it presents a cosmopolitan and modern platform for influential partnerships with global brands.



fashiontv





STYLING THE SKYLINE WITH FASHION RESIDENCES

- Bringing Fashion to everyday Life with Branded Residences
- Designing an Ultimate Choice of Panache for Celebrities
- Presenting an Exclusive Edition of Stylish Abodes





LIFESTYLE FOR THE FAST AND FABULOUS

Reside with Style accompanied by
Top-notch Amenities overlooking
Motor Racing Track.





f. **Première**
BY H&S

f.
fashiontv

ROUTING A RACE TO REGAL RESIDENCES

Settle asides the most superiorly developed and the one and only Formula 1 racing track in India to ace the race of abundant possibilities of national and international prominence. Accelerate your Lifestyle with a Progressive Abode on this Motor Racing Track in Greater Noida, Uttar Pradesh.



Première
BY H&S

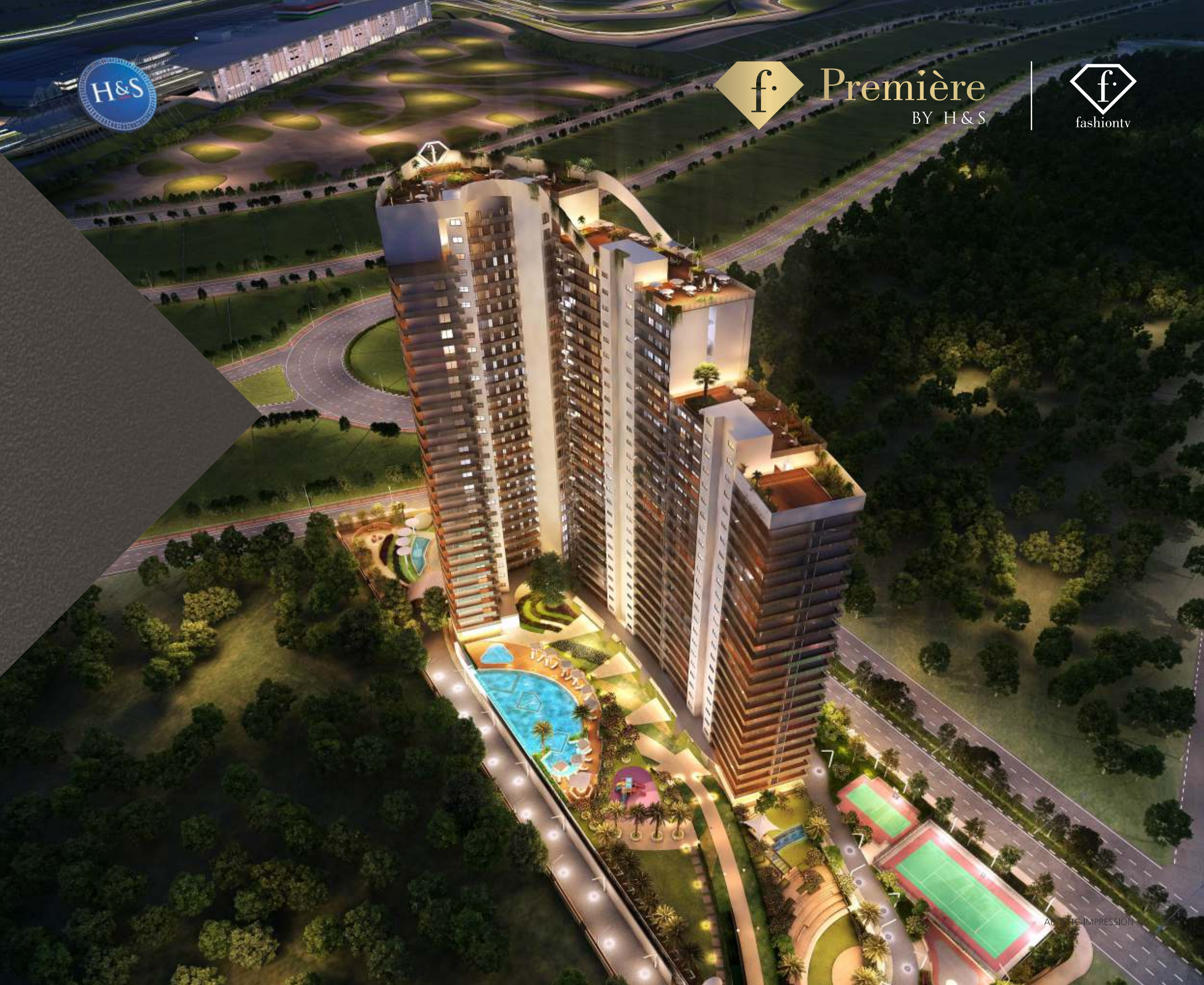


MADE WITH
MAJESTIC
MAGNIFICENCE





Première
BY H&S



ARTIFICIAL IMPRESSION



STYLING THE ART OF EXCLUSIVITY

Featuring Fashion Edition Homes for
the Exceptional Trendsetters.





Sky Lounge —



— Landscaped Drop-off Zone



Swimming Pool —



Première
BY H&S



HAUTE COUTURE HOMES

Strategically located just off the state-of-the-art
Yamuna Expressway overlooking the F1 track

An exclusive residents 'Sky Lounge' set on level
22-23 with magnificent views

Club Premiere with a grand pool, gymnasium, steam
room and a multipurpose hall

Amphitheatre, badminton, tennis & basketball court
and skating rink for outdoor recreational activities

Choice of 2,3 & 4 BHK Signature Style Residences

— Sky Lounge

SITE PLAN



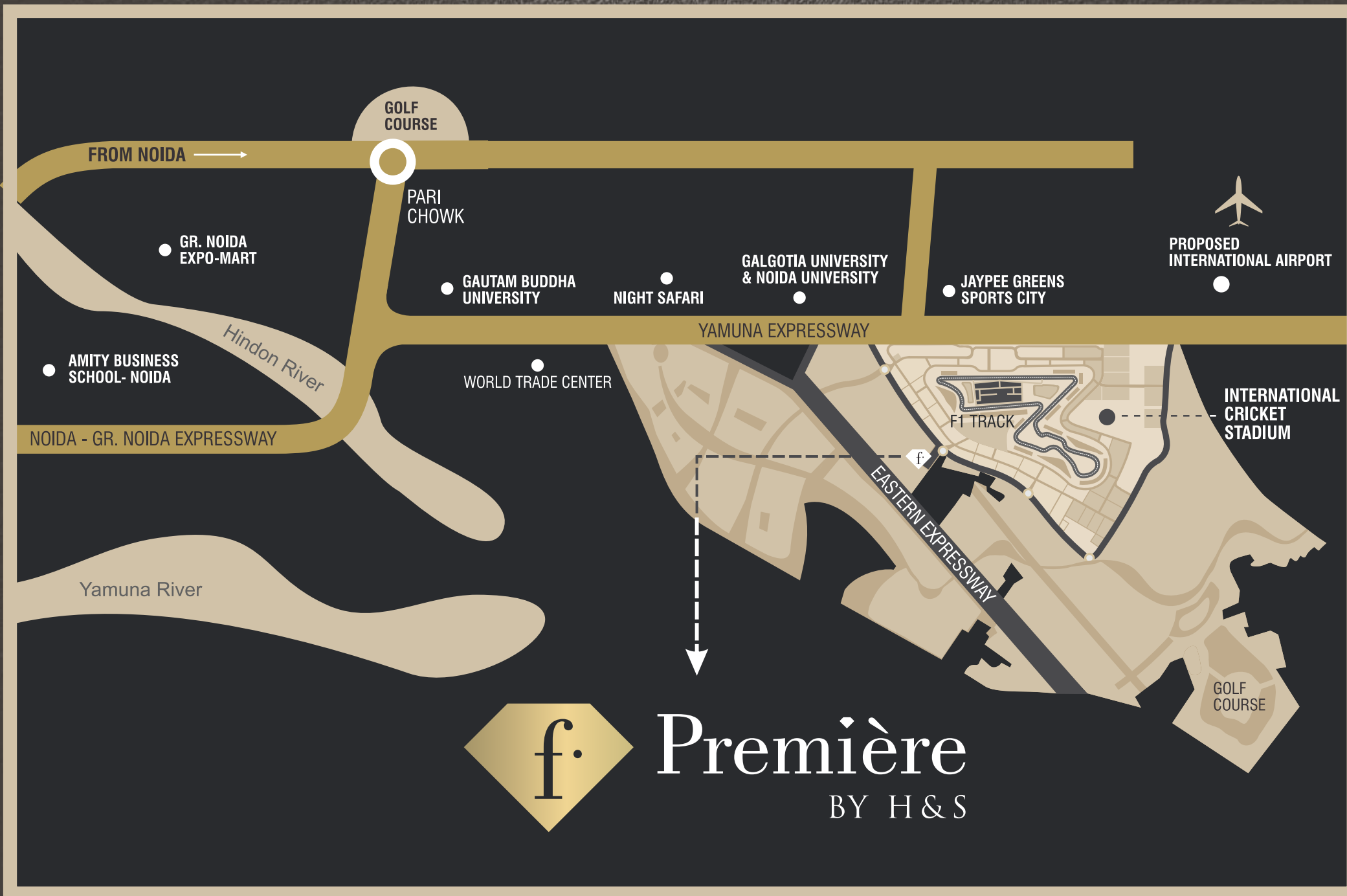
- 1. Guard Room And Main entry
- 2. Tower Entrance Plaza
- 3. Towers
- 4. Jogging path
- 5. Kids Play area

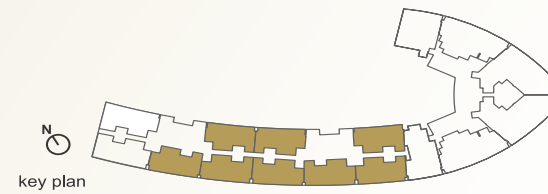
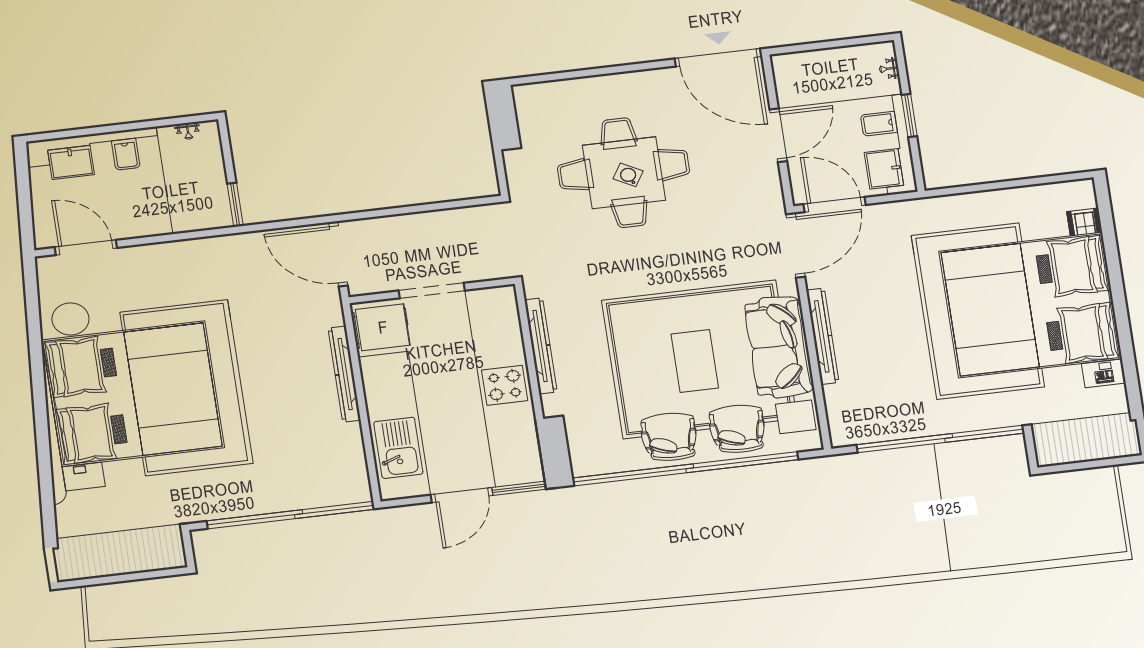
- 6. Sit Out Space
- 7. Pavilion
- 8. Amphitheatre
- 9. Basketball/Badminton Court
- 10. Tennis Court

- 11. Skating Rink
- 12. Water Sheet Fall
- 13. Lawns
- 14. Greens
- 15. Kids Pool

- 16. Main Pool
- 17. Pool Deck
- 18. Juice Bar
- 19. Seating Under Canopy

LOCATION MAP





UNIT TYPE- 2 BHK 1250 SQ FT

DESCRIPTION	SIZES IN FEETS	SIZES IN MILLIMETERS	DESCRIPTION	SIZES IN FEETS	SIZES IN MILLIMETERS
DRAWING/ DINING ROOM	10'-10" X 18'-4"	3300 X 5565	BEDROOM	12'-0" X 10'-11"	3650 X 3325
KITCHEN	6'-7" X 9'-0"	2000 X 2785	TOILET	4'-11" X 7'-0"	1500 X 2125
BEDROOM	12'-6" X 13'-0"	3820 X 3950	BALCONY : MAX. DEPTH	6'-4"	1925
TOILET	7'-3" X 4'-11"	2200 X 1500			

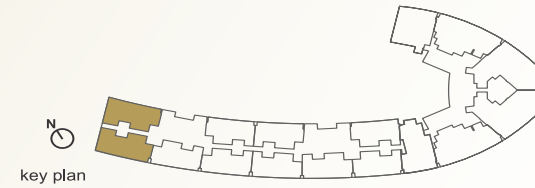
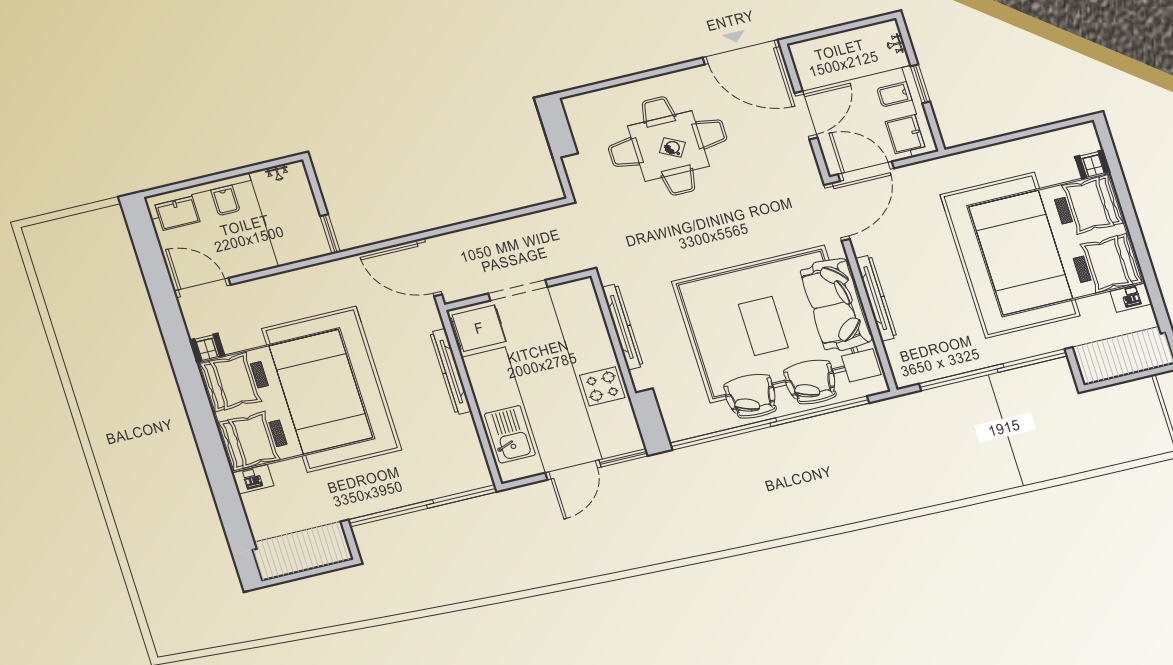
Disclaimer : All the designs and sizes mentioned in the brochure are tentative and subject to change due to technical reasons and on the sole discretion of the developer.



Première
BY H&S



FLOOR PLAN



UNIT TYPE- 2 BHK + TERRACE 1380 SQ FT					
DESCRIPTION	SIZES IN FEET	SIZES IN MILLIMETERS	DESCRIPTION	SIZES IN FEET	SIZES IN MILLIMETERS
DRAWING/ DINING ROOM	10'-10" X 18'-4"	3300 X 5565	BEDROOM	12'-0" X 10'-11"	3650 X 3325
KITCHEN	6'-7" X 9'-0"	2000 X 2785	TOILET	4'-11" X 7'-0"	1500 X 2125
BEDROOM	11'-0" X 13'-0"	3350 X 3950	BALCONY : MAX. DEPTH	6'-3"	1915
TOILET	7'-3" X 4'-11"	2200 X 1500			

Disclaimer : All the designs and sizes mentioned in the brochure are tentative and subject to change due to technical reasons and on the sole discretion of the developer.

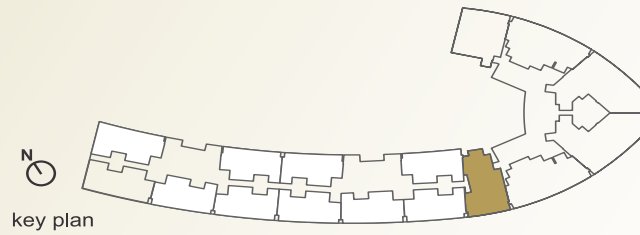


Première
BY H&S



fashiontv

FLOOR PLAN



UNIT TYPE- 2 BHK + STUDY 1630 SQ FT

DESCRIPTION	SIZES IN FEET	SIZES IN MILLIMETERS	DESCRIPTION	SIZES IN FEET	SIZES IN MILLIMETERS
DRAWING/ DINING ROOM	11'-2" X 22'-10"	3400 X 6895	STUDY ROOM	11'-5" X 9'-0"	3485 X 2740
KITCHEN	7'-6" X 9'-0"	2250 X 2750	MASTER BEDROOM	11'-7" X 12'-7"	3535 X 3830
BEDROOM	11'-9" X 12'-0"	3575 X 3650	TOILET	4'-11" X 7'-6"	1500 X 2250
TOILET	7'-0" X 4'-11"	2135X1500	BALCONY : MAX. DEPTH	9'-6"	2920

Disclaimer : All the designs and sizes mentioned in the brochure are tentative and subject to change due to technical reasons and on the sole discretion of the developer.

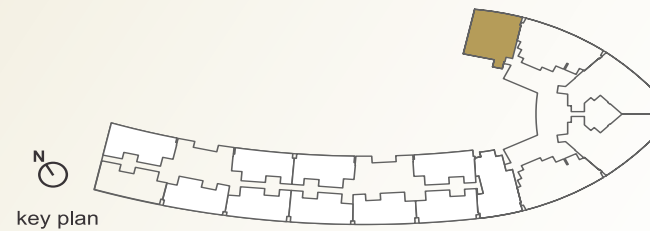
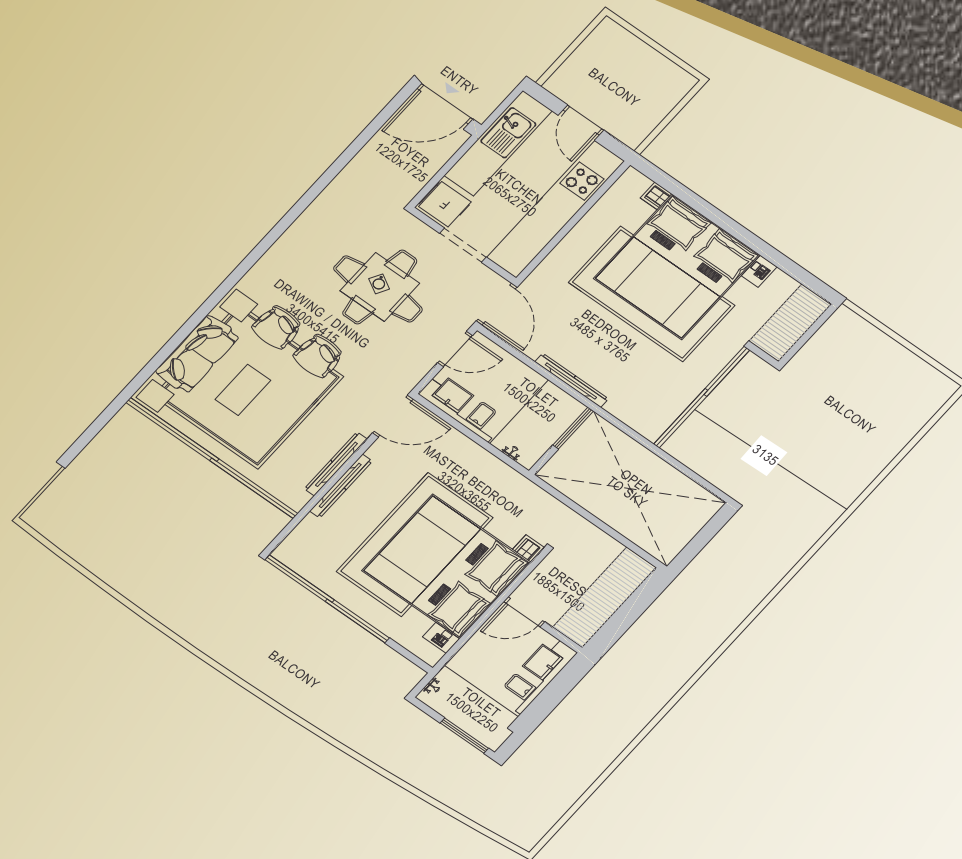


Première
BY H&S



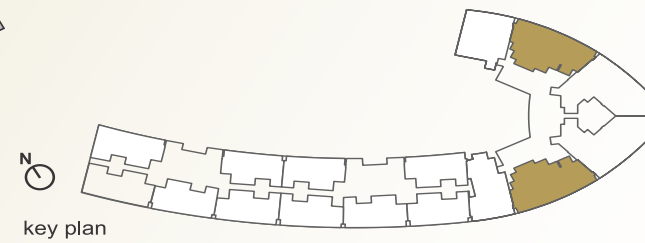
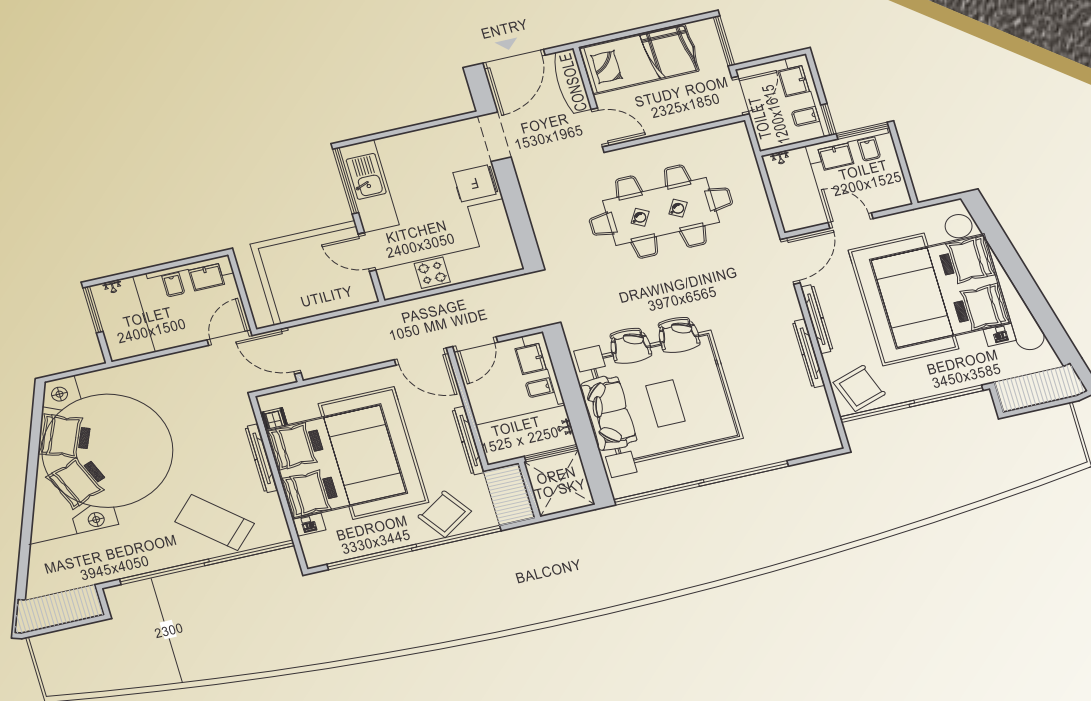
fashiontv

FLOOR PLAN



UNIT TYPE- 2 BHK LX 1640 SQ FT					
DESCRIPTION	SIZES IN FEETS	SIZES IN MILLIMETERS	DESCRIPTION	SIZES IN FEETS	SIZES IN MILLIMETERS
FOYER	4'-0" X 5'-8"	1220 X 1725	MASTER BEDROOM	10'-10" X 12'-0"	3320 X 3655
DRAWING/ DINING ROOM	11'-2" X 17'-10"	3400 X 5415	DRESS	6'-2" X 4'-11"	1885 X 1500
KITCHEN	6'-8" X 9'-0"	2065 X 2750	TOILET	4'-11" X 7'-6"	1500 X 2250
BEDROOM	11'-5" X 12'-4"	3485 X 3765	BALCONY : MAX. DEPTH	10'-3"	3135
TOILET	4'-11" X 7'-6"	1500 X 2250			

Disclaimer : All the designs and sizes mentioned in the brochure are tentative and subject to change due to technical reasons and on the sole discretion of the developer.



UNIT TYPE- 3 BHK			2150 SQ FT		
DESCRIPTION	SIZES IN FEET	SIZES IN MILLIMETERS	DESCRIPTION	SIZES IN FEET	SIZES IN MILLIMETERS
FOYER	5'-0" X 6'-6"	1530 X 1965	TOILET	7'-3" X 5'-0"	2200 X 1525
DRAWING/ DINING ROOM	13'-0" X 21'-8"	3970 X 6565	BEDROOM	10'-11" X 11'-4"	3330 X 3445
KITCHEN	7'-11" X 10'-0"	2400 X 3050	TOILET	5'-0" X 7'-6"	1525 X 2250
STUDY ROOM	7'-9" X 6'-1"	2325 X 1850	MASTER BEDROOM	13'-0" X 13'-4"	3945 X 4050
TOILET	3'-11" X 5'-3"	1200 X 1615	TOILET	7'-11" X 4'-11"	2400 X 1500
BEDROOM	11'-4" X 11'-9"	3450 X 3585	BALCONY : MAX. DEPTH	7'-6"	2300

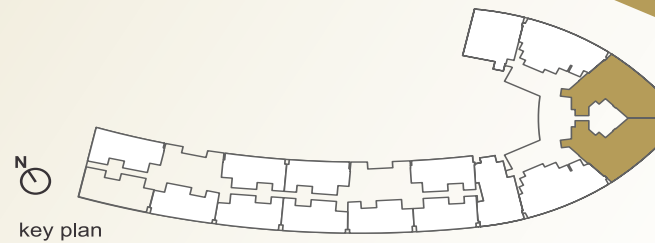
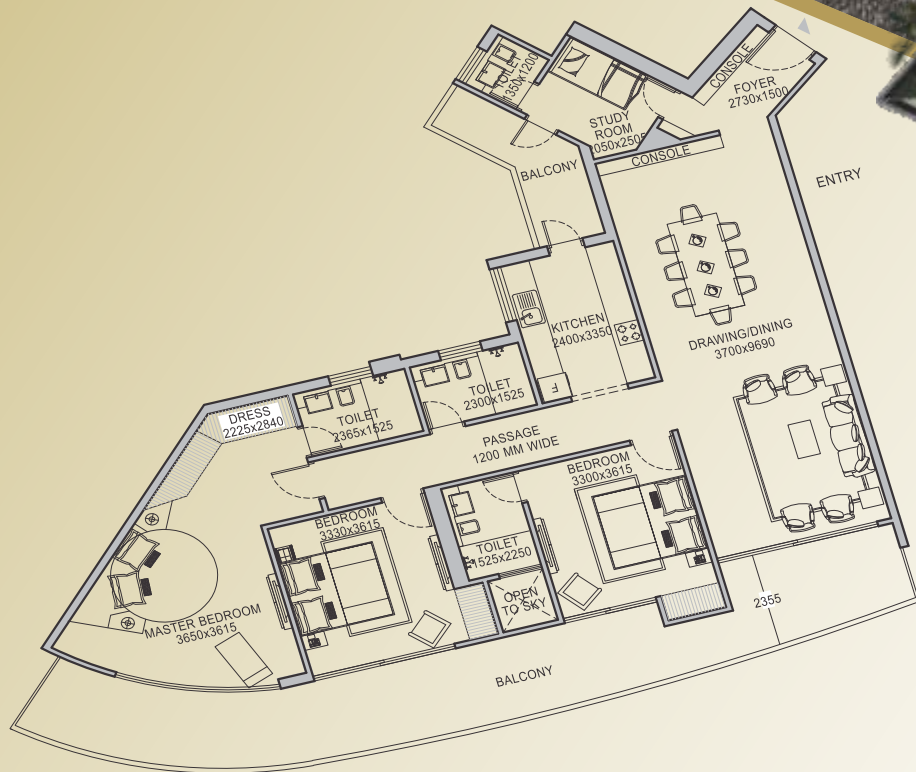
Disclaimer : All the designs and sizes mentioned in the brochure are tentative and subject to change due to technical reasons and on the sole discretion of the developer.



Première
BY H&S



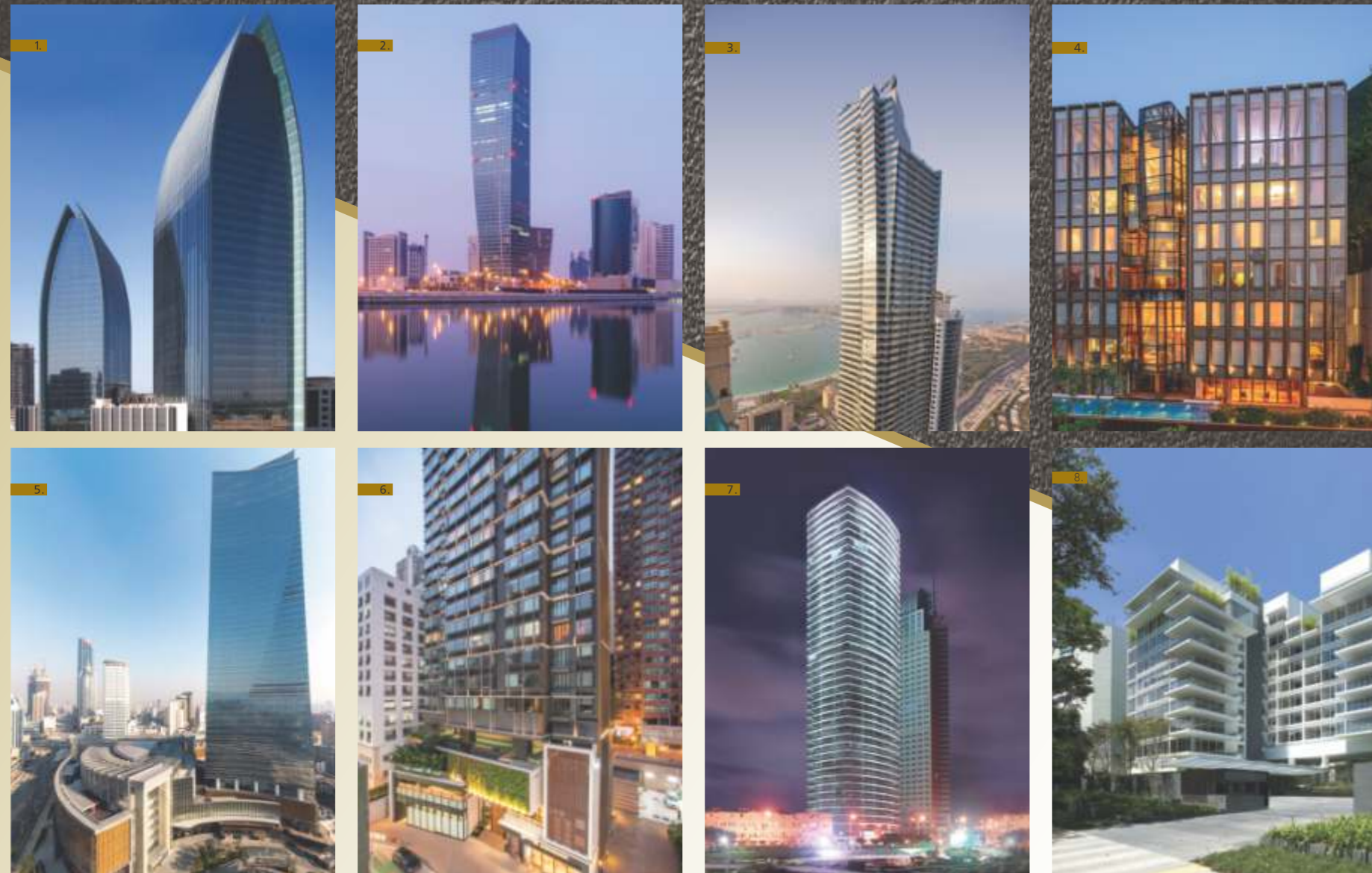
FLOOR PLAN



UNIT TYPE- 3 BHK LX 2555 SQ FT

DESCRIPTION	SIZES IN FEETS	SIZES IN MILLIMETERS	DESCRIPTION	SIZES IN FEETS	SIZES IN MILLIMETERS
FOYER	8'-11" X 4'-11"	2730 X 1500	BEDROOM	10'-11" X 11'-10"	3330 X 3615
DRAWING/ DINING ROOM	12'-2" X 32'-0"	3700 X 9690	TOILET	7'-7" X 5'-0"	2300 X 1525
KITCHEN	7'-10" X 11'-0"	2400 X 3350	MASTER BEDROOM	12'-0" X 11'-10"	3650 X 3615
STUDY ROOM	6'-9" X 8'-2"	2050 X 2505	DRESS	7'-4" X 9'-4"	2225 X 2840
TOILET	4'-6" X 3'-11"	1350 X 1200	TOILET	7'-9" X 5'-0"	2365 X 1525
BEDROOM	10'-10" X 11'-10"	3300 X 3615	BALCONY : MAX. DEPTH	7'-9"	2355
TOILET	5'-0" X 7'-6"	1525 X 2250			

Disclaimer : All the designs and sizes mentioned in the brochure are tentative and subject to change due to technical reasons and on the sole discretion of the developer.



1. BOULEVARD PLAZA, DUBAI 2. U-BORA TOWERS, DUBAI 3. OCEAN HEIGHTS, DUBAI (DESIGNED BY ANDREW BROMBERG OF AEDAS)
4. THR350, HONG KONG 5. GRAMERCY, HONG KONG 6. FORTUNE CENTRE, XIAMEN, CHINA 7. CENTER 66, WUXI, CHINA
8. NAPIER, SINGAPORE

CONCEPT BY
ACCLAIMED ARCHITECT

Aedas

SINGAPORE

Aedas is one of the world's leading global architectural firms based in Singapore. The group offers services in architecture, interior design, landscaping & building consultancy for mixed-use, commercial, retail, residential, hospitality & social infrastructure, as well as master planning and urban design within Asia, the Middle East, Europe and America.

Aedas global platform for creative excellence in design enables some of the world's most talented designers to plug into the latest information and delivery systems they need to produce truly world-class design solutions.



ONGOING PROJECTS



PROJECT FUNDED AND BACKED BY



Special window for completion of construction of affordable & mid income housing projects

Home & Soul

Corporate Office: Tapasya Corporate Heights, Ground Floor, Sector-126, Noida Expressway, Noida
T 0120 4263 460 +91 9999 980 055 E info@homeandsoul.com

www.homeandsoul.com

DISCLAIMER: RERA Registration Number(s) for F Premiere: UPRERAPRJ7115, UPRERAPRJ7173 and UPRERAPRJ7195 available at <https://www.up-rera.in/index..>

Sanction Letter Number: BP-55/1065 dated 10.10.2014. **Project Name:** F Premiere, The project is being developed by M/s Home & Soul Infratech Pvt. Ltd. ("Developer"). The project comprises of on the plot admeasuring approximately 14166.50 Sq. Mtr. ("Project Land"). All the specifications, designs, layouts, images, conditions are purely indicative in nature and can be changed at the sole discretion of the developer/ authority as these are purely conceptual and constitute no legal offerings nor legally binding.

While very attempt shall be made to ensure the accuracy of the plans (as shown) which are as per the sanctioned site plan approved by and issued by Yamuna Expressway Industrial Development Authority. It is also informed that all measurements, positioning, fixtures, fittings, and any other data shown are an approximate interpretation for illustrative and for the purpose of customer convenience only and not to scale. The developer reserves right to make changes in the plans, specifications, dimensions, and elevations as and when required as the applicable laws in force. All the specifications of the apartment/unit/flat shall be as per the final agreement executed with the developer. Customer are advised to apprise themselves of the

necessary and relevant information of the project prior to making any purchase decision.

1 sq. ft. = 0.0920 sq. mt.; 1 sq. mt. = 10.764 sq. ft.; 1 ft. = 0.0305 mt.; 1 mt. = 3.281 ft.