

REVEL IN THE SPOTLIGHT  
AT PUNE'S MOST  
GLAMOROUS ADDRESS.



**RESIDENCES**

new kalyani nagar

411014

ACTUAL SITE IMAGE



## DISCOVER FASHION IN EVERY SQUARE FOOT.

---

A COLLABORATION WITH PARIS BASED INTERNATIONAL FASHION CHANNEL – FTV AND BRAMHACORP LTD.; F RESIDENCES IN THE UPSCALE NEIGHBOURHOOD OF NEW KALYANI NAGAR IS A STYLE STATEMENT IN GLAMOROUS LIVING FOR THE SOCIETY'S HIP AND SWISH SET.

THE PROJECT INCORPORATES SOME OF THE MOST ICONIC FASHION ELEMENTS INTO ITS ARCHITECTURE AND SEAMLESSLY BLENDS FASHIONABLE LIVING WITH WORLD CLASS AMENITIES, TAKING LUXURY TO THE NEXT LEVEL.

# LOCATED IN PUNE'S MOST ENVIED NEIGHBOURHOOD.



## PROXIMITIES



- CONNECTIVITY**
- PUNE INTERNATIONAL AIRPORT
  - PUNE RAILWAY STATION
  - VIMAN NAGAR
  - KHARADI
  - KOREGAON PARK
  - M. G. ROAD



- HOTELS**
- HYATT REGENCY
  - HOTEL NOVOTEL
  - THE WESTIN



- MALLS**
- PHOENIX MALL
  - INORBIT MALL
  - MARIPLEX BIG CINEMAS
  - NITESH HUB



- EDUCATIONAL INSTITUTES**
- SYMBIOSIS COLLEGE
  - BISHOP'S SCHOOL
  - ARNOLD'S SCHOOL



IMAGE FOR REPRESENTATIONAL PURPOSE ONLY

Disclaimer: This Is An Indicative Map And Not To Scale.



**RESIDENCES**

## AMENITIES

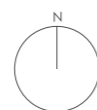
---

- STYLISHLY PLANNED SPACES
- FULLY EQUIPPED SPORTS ARENA
- CHILDREN'S PLAY AREA
- EXCLUSIVE SWIMMING POOL
- AIR-CONDITIONED GYMNASIUM
- AMPHITHEATER

IMAGE FOR REPRESENTATIONAL PURPOSE ONLY

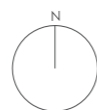
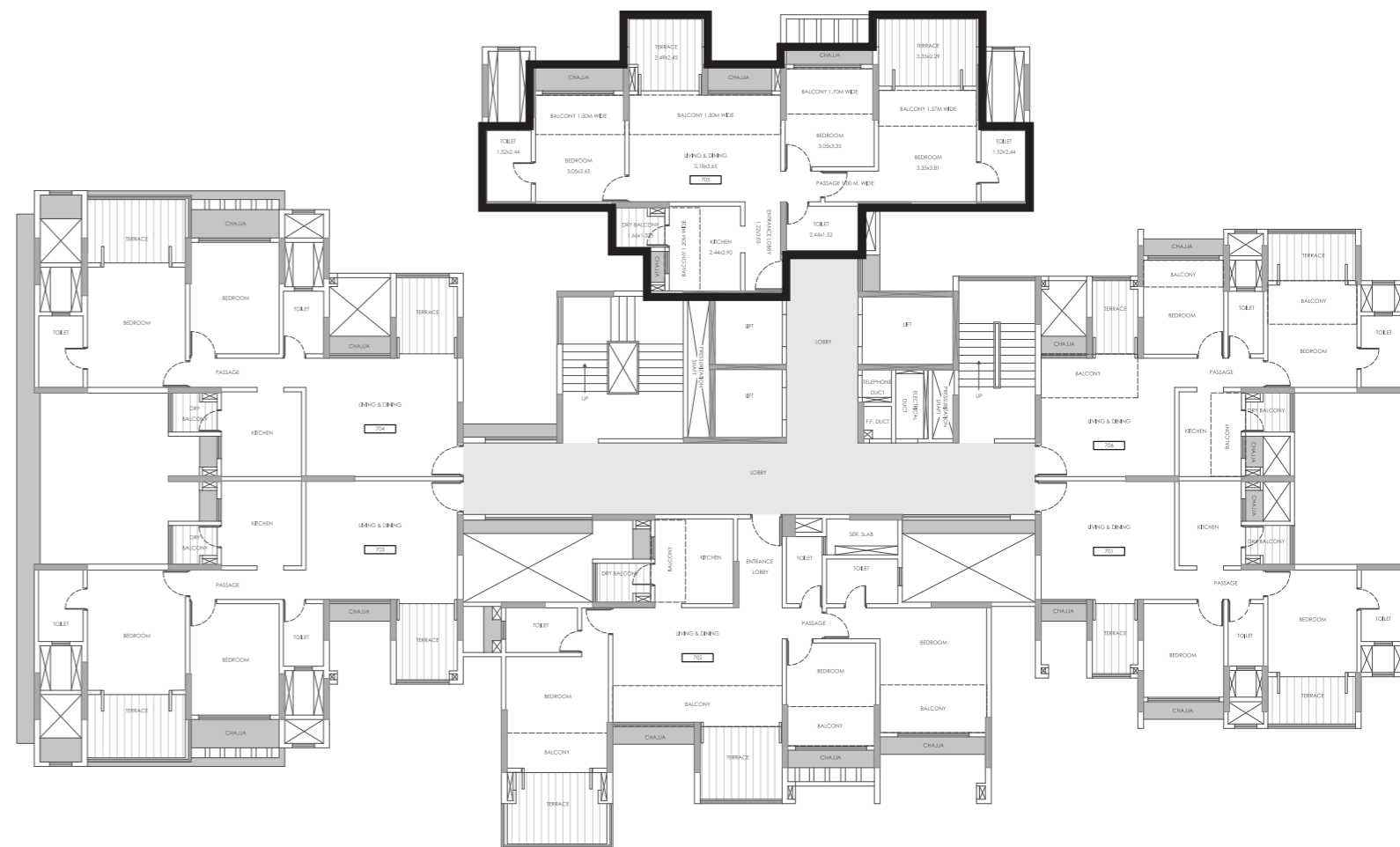
# THOUGHTFULLY PLANNED. FASHIONABLY STYLED.

\*FLOOR PLAN TOWER 6  
TYPICAL 2 BHK CONFIGURATION



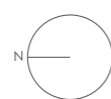
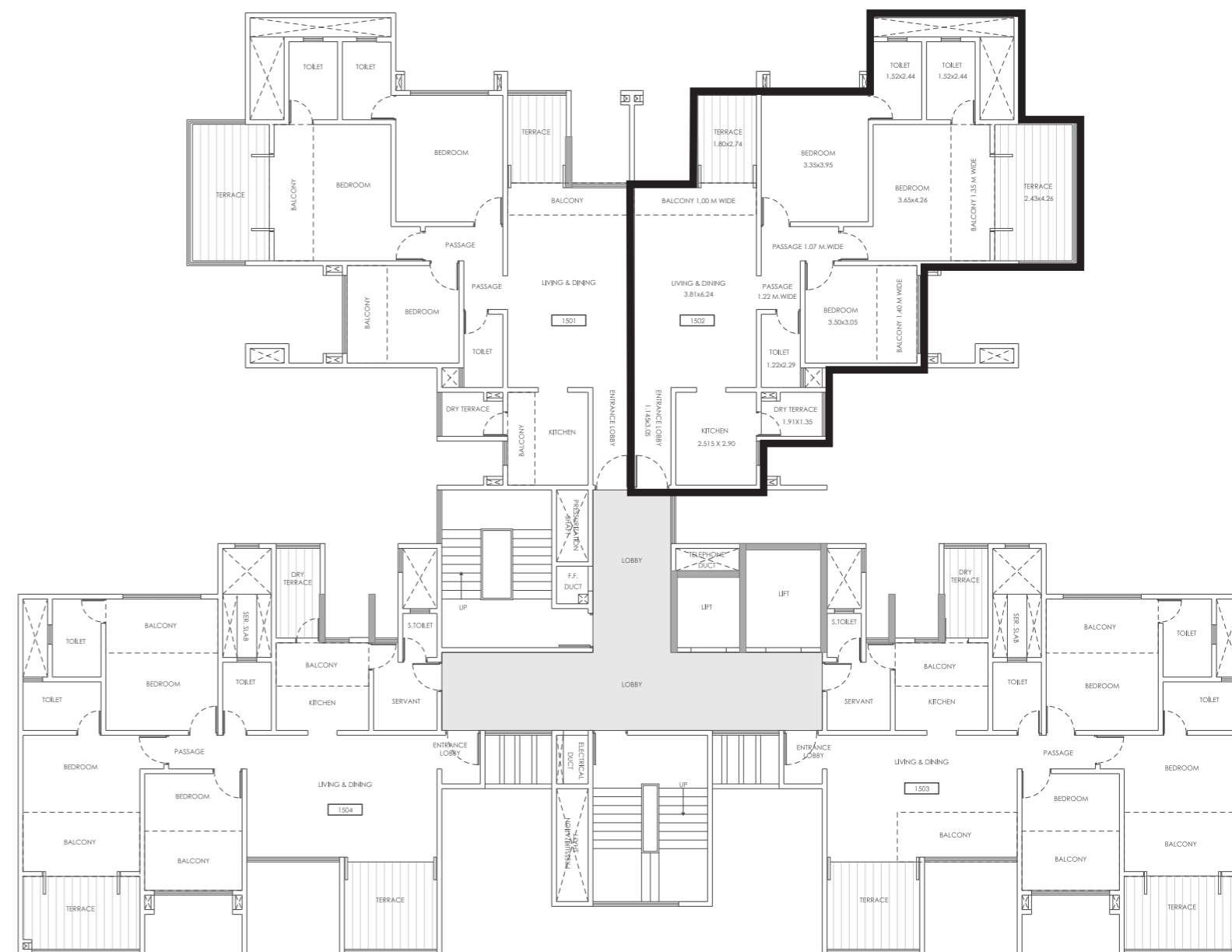
# THOUGHTFULLY PLANNED. FASHIONABLY STYLED.

\*FLOOR PLAN TOWER 7  
TYPICAL 3 BHK CONFIGURATION



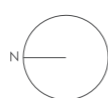
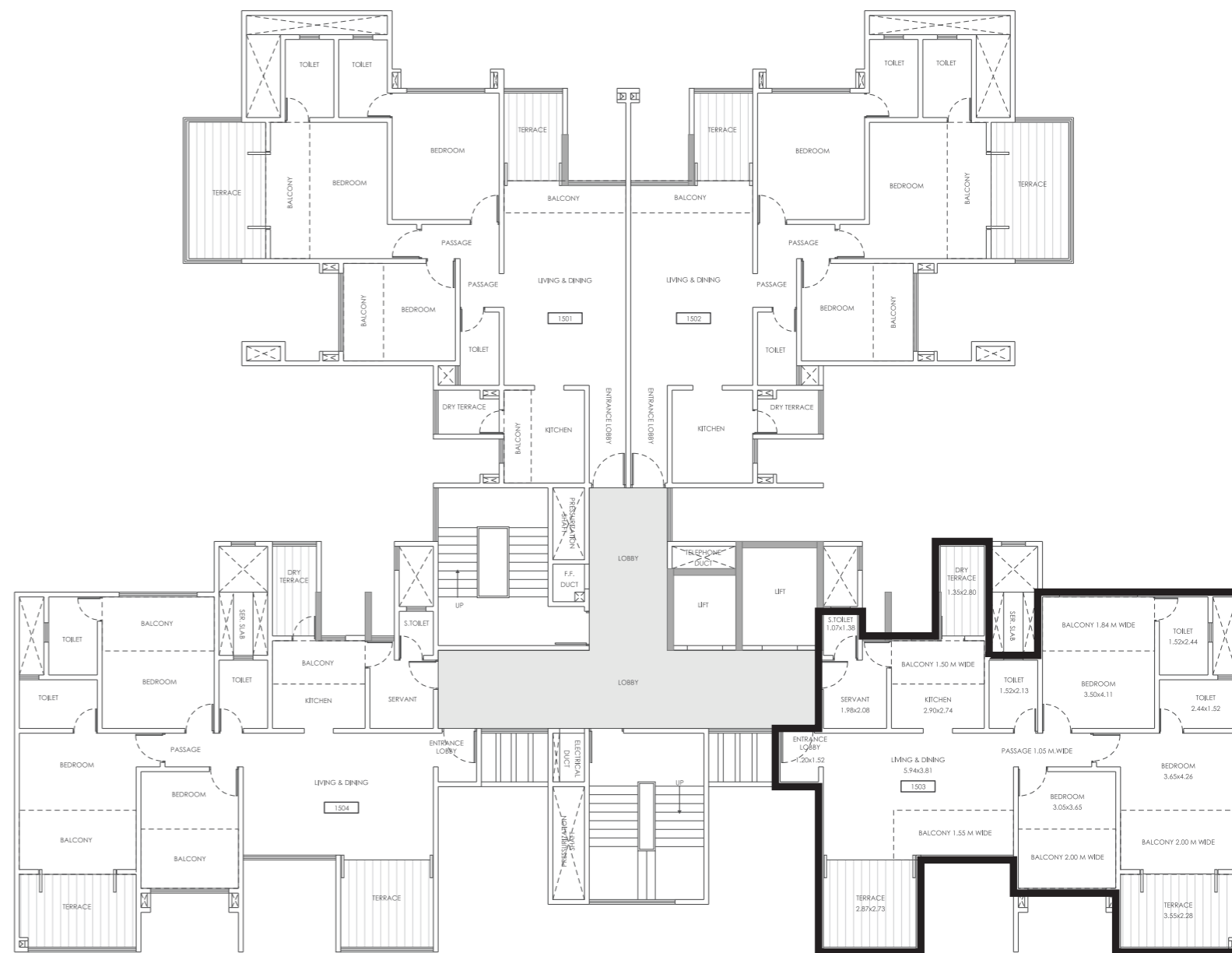
# THOUGHTFULLY PLANNED. FASHIONABLY STYLED.

\*FLOOR PLAN TOWER 8 - DIAMOND TOWER  
TYPICAL 3 BHK CONFIGURATION



# THOUGHTFULLY PLANNED. FASHIONABLY STYLED.

\*FLOOR PLAN TOWER 8 - DIAMOND TOWER  
TYPICAL 3.5 BHK CONFIGURATION





# BIRD'S EYE VIEW

LIKE A JEWEL IN A PERFECT SETTING, YOUR HOME DAZZLES AGAINST A REFINED BACKDROP THAT DEFINES HIGH-CLASS.

THE 22 STOREYED DIAMOND TOWER IS AN ULTRA PREMIUM TOWER IN F-RESIDENCES WITH TAILOR MADE, CONCEPT HOMES. WITH THESE CONDOS MADE TO SPECIFICATION, YOU DEFINE YOUR OWN STYLE AND CREATE YOUR VERY OWN COMFORT ZONE.



- A** Entrance Gate
- B** Swimming Pool
- C** Tennis Court
- D** Children's Play Zone
- E** Amphitheatre
- F** Seating Plaza
- G** Basket Ball Court

# BRAMHACORP LTD. IN THE BUSINESS OF CREATING FIRSTS.

---

HEADQUARTERED IN PUNE, BRAMHACORP LTD. IS A LEADING BUSINESS GROUP WITH DIVERSE BUSINESS INTERESTS IN REAL ESTATE, HOSPITALITY, RETAIL AND LEISURE. DRIVEN BY A SHARP, FOCUSED VISION AND DYNAMIC APPROACH, THE GROUP HAS BEEN AT THE FOREFRONT OF CREATING NUMEROUS FIRSTS IN EVERY VERTICAL. OVER THE LAST 35 YEARS, BRAMHACORP LTD. HAS ACHIEVED NUMEROUS MILESTONES AND THE GROUP IS WELL ON COURSE TO REDEFINE BENCHMARKS IN ITS JOURNEY FORWARD.



  
**Sheraton  
Grand**  
PUNE BUND GARDEN HOTEL

ACTUAL IMAGE



ACTUAL IMAGE



ACTUAL IMAGE



ACTUAL IMAGE



ACTUAL IMAGE



ACTUAL IMAGE



ACTUAL IMAGE



Le MERIDIEN  
MAHABALESHWAR  
RESORT & SPA

Sheraton  
Grand  
PUNE BUND GARDEN HOTEL

BRAMHACORP

BRAMHA  
Le MERIDIEN  
NEW KILYANI NAGAR, PUNE  
MAHABALESHWAR  
RESORT & SPA

Residency  
CLUB®  
PUNE

Residency  
LAKE RESORT  
MULSHI



# PROMOTERS OF:

---



**Sheraton  
Grand**  
PUNE BUND GARDEN HOTEL

*Le* **MERIDIEN**  
MAHABALESHWAR  
RESORT & SPA

*RL*  
**RESIDENCY  
LAKE RESORT**  
-  
MULSHI

*RL*  
**RESIDENCY  
CLUB®**  
-  
PUNE

**BRAMHA  
SUNCITY**  
NEW KALYANI NAGAR, PUNE

*Le* **MERIDIEN**  
MAHABALESHWAR  
RESORT & SPA

ACTUAL IMAGE



**RESIDENCES**

**new kalyani nagar**

411014

OUR FINANCE PARTNER



SITE ADDRESS: F RESIDENCES, NEAR BRAMHA SUNCITY, NEW KALYANI NAGAR, PUNE - 411014

**[www.bramhacorp.in](http://www.bramhacorp.in) | call: 020 4142 3366 | e-mail: [presales@bramhacorp.in](mailto:presales@bramhacorp.in)**

The projects shown in the brochure are of proposed nature. The promoter / developer notify to all the proposed allottees that they reserve all the rights to commence, construct and complete the project and its various amenities described in various phases. The brochure is purely conceptual and not a legal offer/advice/representation/inducement. The brochure is indicative of how the furniture can be arranged in the concerned unit. Nothing else other than the amenities and specifications enshrined in Standard agreement is committed to be supplied to the purchaser by the developer unless otherwise mentioned. All images unless otherwise mentioned are used for illustrative purpose only. For more information on the project regarding its approvals / sanctions / phase wise permissions / phase wise amenities etc. please visit the Real Estate Regulatory Act (RERA) website. Please ensure its diligent view before booking of unit to promote healthy and prosperous association. The RERA registration nos. of this project are P52100001526 & P52100002099. Brochure Version: 002-July2018. <http://maharera.mahaonline.gov.in/>